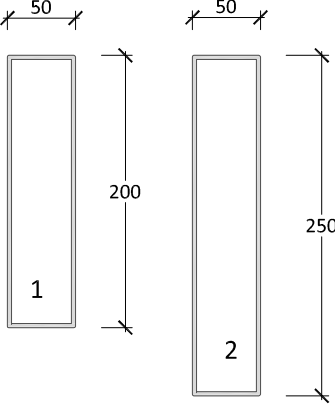
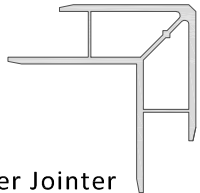
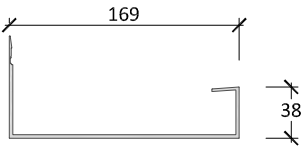
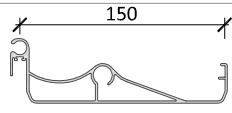






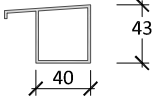

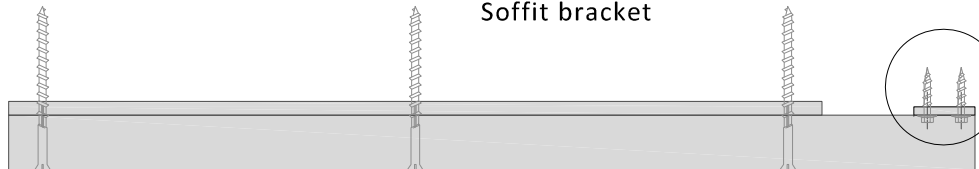
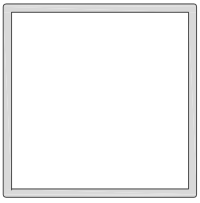
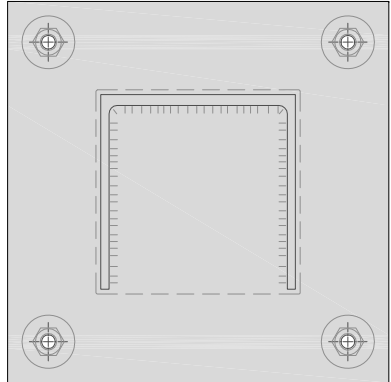
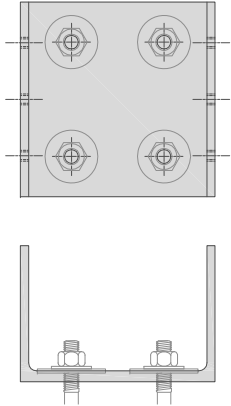
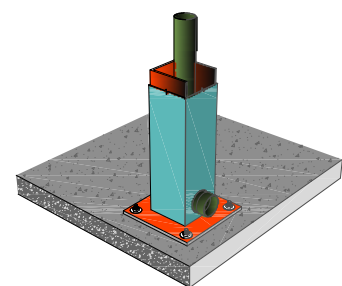
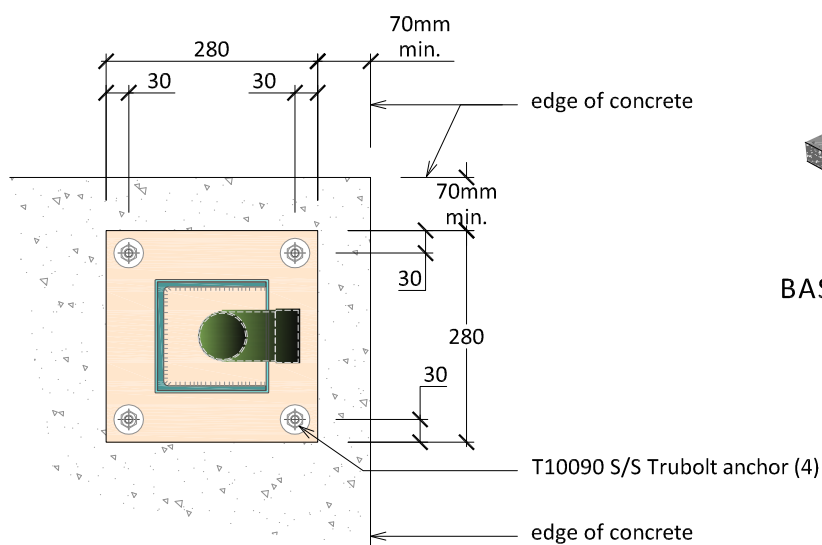
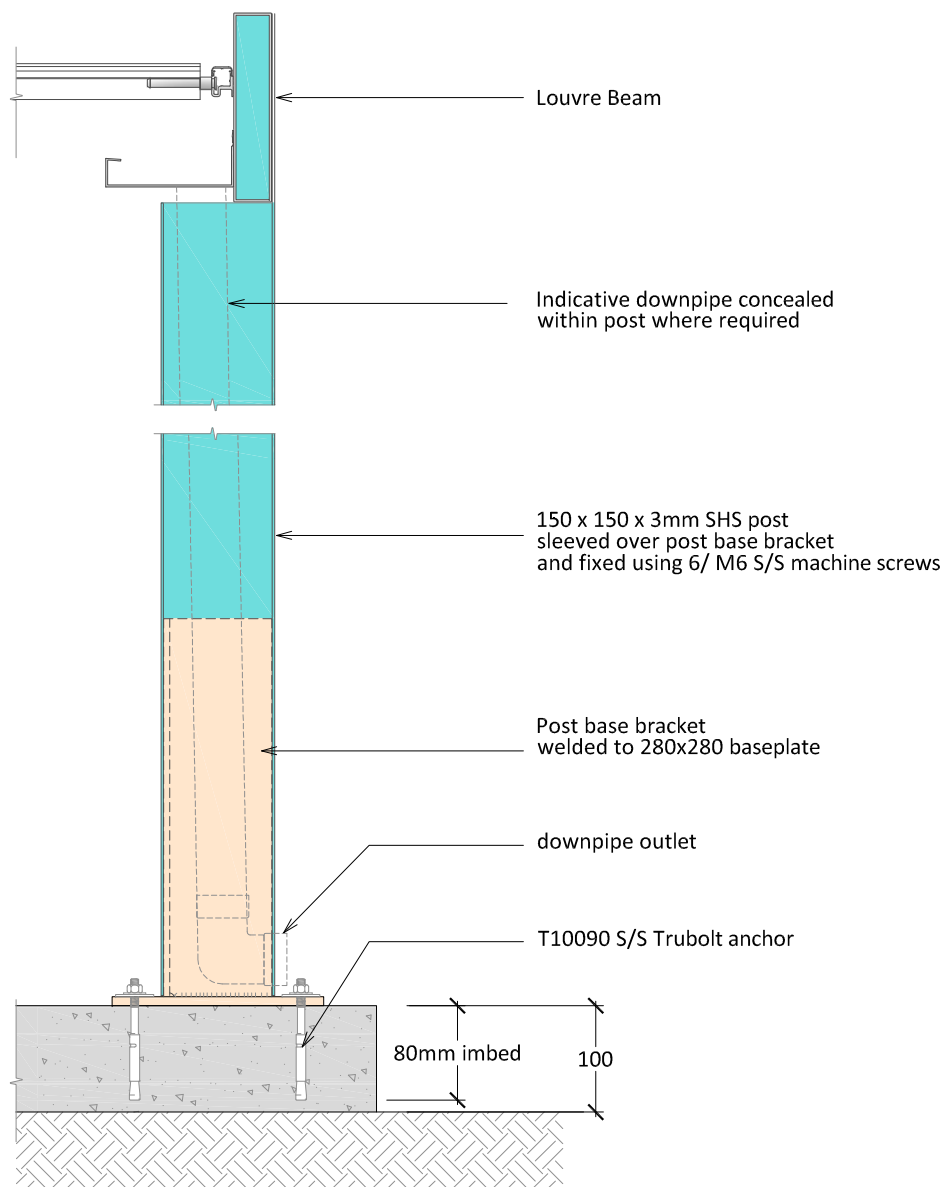


PACIFIC LOUVRE ROOFS - SYSTEM COMPONENTS

Product	Description
	<p>Supporting Beam A primary beam to which the louvre support track is directly fixed. Also, a secondary beam supporting a primary beam.</p> <p>1/. Aluminium Beam 200x50 2/. Aluminium Beam 250x50</p>  <p>Beam Corner Jointer Aluminium extrusion 2 sizes to suit 200 / 250 beam heights</p>
	Louvre Gutter
	Louvre Blade
	Louvre pin
	Motor pivot pin
	Driver arm - aluminium extrusion cut to suit
	Cap - extrusion fixes to lock channel
	Lock channel - longitudinal support channel for the louvres
	Angle
	<p>Light Bar Optional accessory - clips onto inside edge of Louvre gutter</p>
	<p>Fascia bracket Length varies as required, mounts directly to fascia & to underside of beam</p>
	<p>Soffit bracket</p> <p>Soffit Riser Custom Bracket a vertical post of specified length will add height as needed to clear any obstruction</p>
 <p>150 x 150 x 3mm SHS Aluminium Post</p>	 <p>Post Fixed base</p>  <p>Pinned base bracket</p>

PACIFIC LOUVRE ROOFS - BASE PLATE / CONCRETE



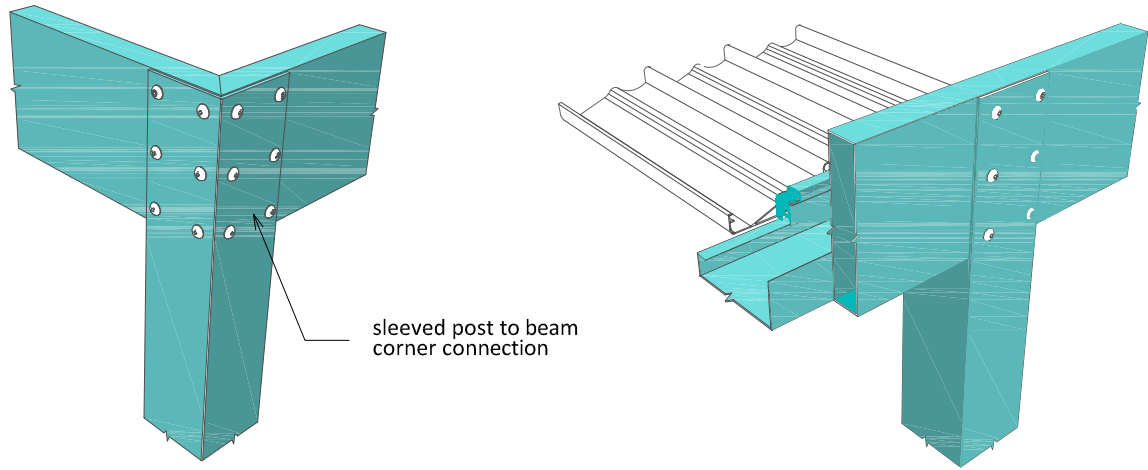
BASE PLATE ON CONCRETE

BASE PLATE ON CONCRETE

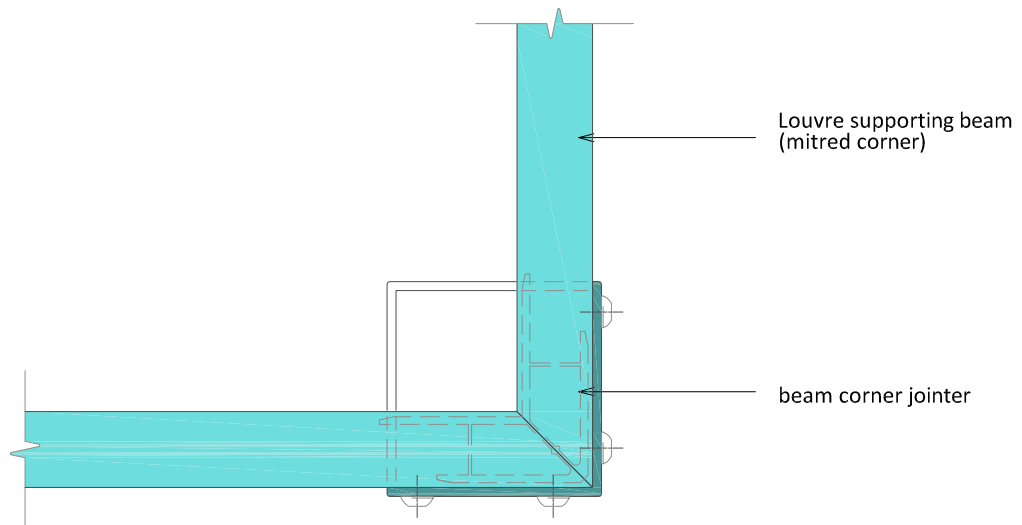
Disclaimer: This information is intended solely as a guide only for the installation of Pacific Outdoor Solutions Ltd products and is to be used in conjunction with the Pacific Outdoor Solutions Limited Louvre Design Manual, NZS 3604 and to comply with the requirements of E2/AS1. All foundations and supporting structure are to be designed to include appropriate fixing allowances for the addition of the louvre system by the building owners designer and contractor. Before ordering ensure that the product is suitable for use in the specific application. Nothing in this information constitutes a statement of fitness for particular purpose - appropriate expert advice should always be obtained. Pacific Outdoor Solutions Ltd makes no warranty regarding the use of this information with non-Pacific Outdoor Solutions Ltd product.

The copyright of this document is the property of Pacific Outdoor Solution Ltd and shall not be reproduced, copied or loaned without prior consent.

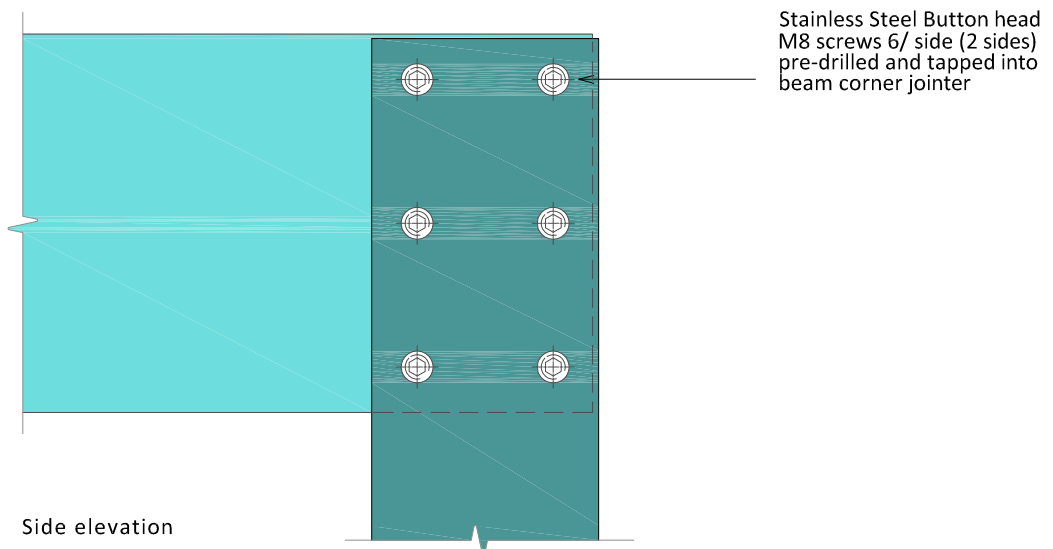
PACIFIC LOUVRE ROOFS - POST / BEAM CONNECTION



Isometric



Plan view



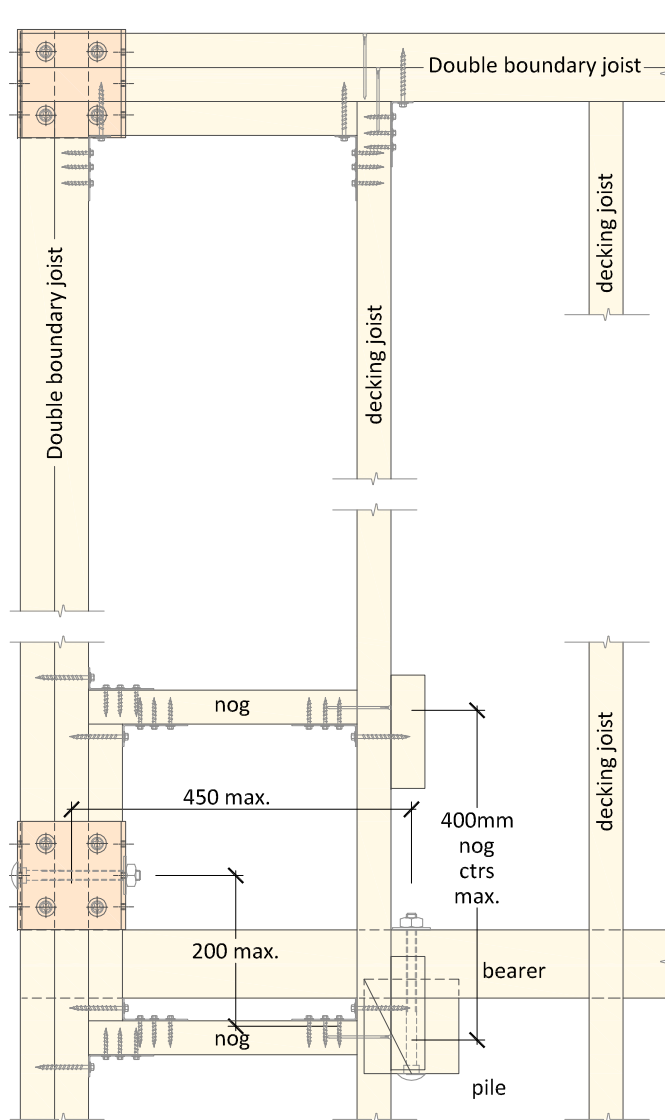
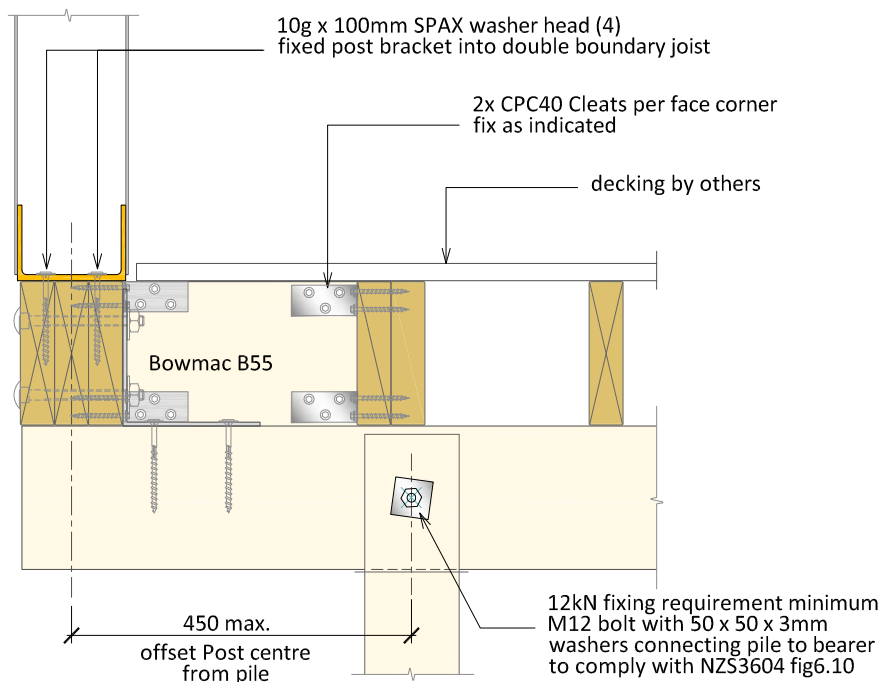
Side elevation

POST / BEAM CORNER DETAIL

scale 1 : 5

Disclaimer: This information is intended solely as a guide only for the installation of Pacific Outdoor Solutions Ltd products and is to be used in conjunction with the Pacific Outdoor Solutions Limited Louvre Design Manual, NZS 3604 and to comply with the requirements of E2/AS1. All foundations and supporting structure are to be designed to include appropriate fixing allowances for the addition of the louvre system by the building owners designer and contractor. Before ordering ensure that the product is suitable for use in the specific application. Nothing in this information constitutes a statement of fitness for particular purpose - appropriate expert advice should always be obtained. Pacific Outdoor Solutions Ltd makes no warranty regarding the use of this information with non-Pacific Outdoor Solutions Ltd product. The copyright of this document is the property of Pacific Outdoor Solution Ltd and shall not be reproduced, copied or loaned without prior consent.

PACIFIC LOUVRE ROOFS - POST BRACKET FIXING / TIMBER DECK



Important Note:

This drawing should be used as an example for reference only and the structural connections shall be designed appropriate to the tributary area / wind zone requirements

Screw or bolt fixing centres required for the Louvre roof to any building element refer to Louvre Design Manual Sections 6.0 Bracing Requirements and 7.0 Supports use these tables to calculate maximum Tributary areas for bracing / bracket centres.

Building structure i.e. Walls / Lintels/ Beams / Roofs must be designed to include the additional tributary loading of the louvre roof assembly.

The Pacific Outdoor Louvre Design Manual configurations relates only to the effect on the local wind pressure coefficients for the Louvre roof only.

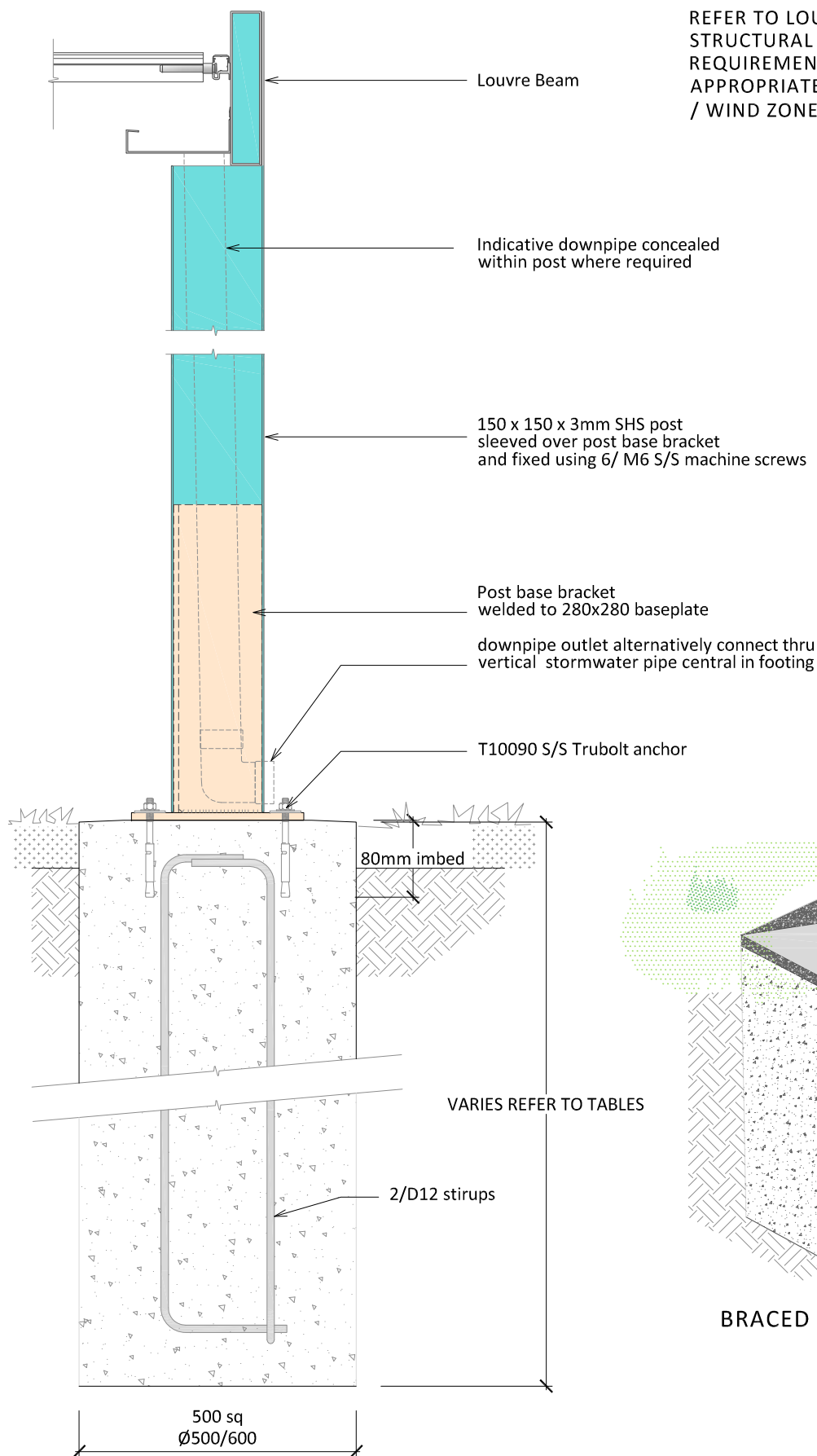
POST BRACKET ON TIMBER DECK

Disclaimer: This information is intended solely as a guide only for the installation of Pacific Outdoor Solutions Ltd products and is to be used in conjunction with the Pacific Outdoor Solutions Limited Louvre Design Manual, NZS 3604 and to comply with the requirements of E2/AS1. All foundations and supporting structure are to be designed to include appropriate fixing allowances for the addition of the louvre system by the building owners designer and contractor. Before ordering ensure that the product is suitable for use in the specific application. Nothing in this information constitutes a statement of fitness for particular purpose - appropriate expert advice should always be obtained.

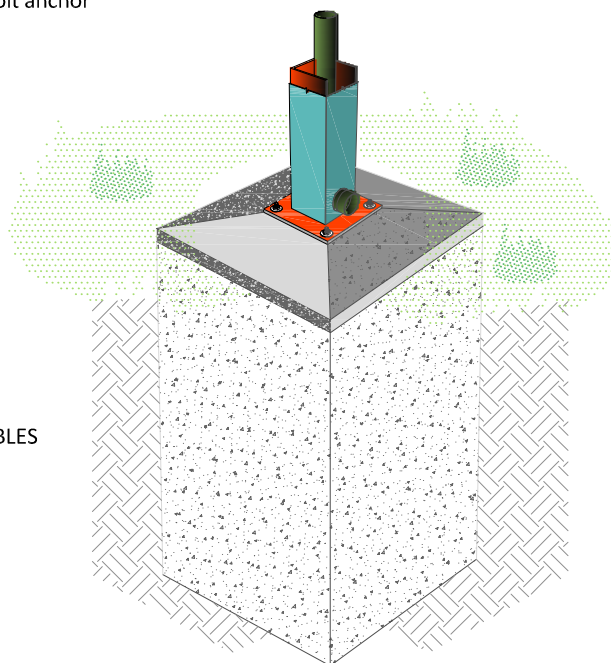
Pacific Outdoor Solutions Ltd makes no warranty regarding the use of this information with non-Pacific Outdoor Solutions Ltd product.

The copyright of this document is the property of Pacific Outdoor Solution Ltd and shall not be reproduced, copied or loaned without prior consent.

PACIFIC LOUVRE ROOFS - BRACED POST CONCRETE FOOTING



REFER TO LOUVRE DESIGN MANUAL
STRUCTURAL REPORT FOOTING
REQUIREMENTS TO BE DESIGNED
APPROPRIATE TO THE TRIBUTARY AREA
/ WIND ZONE REQUIREMENTS



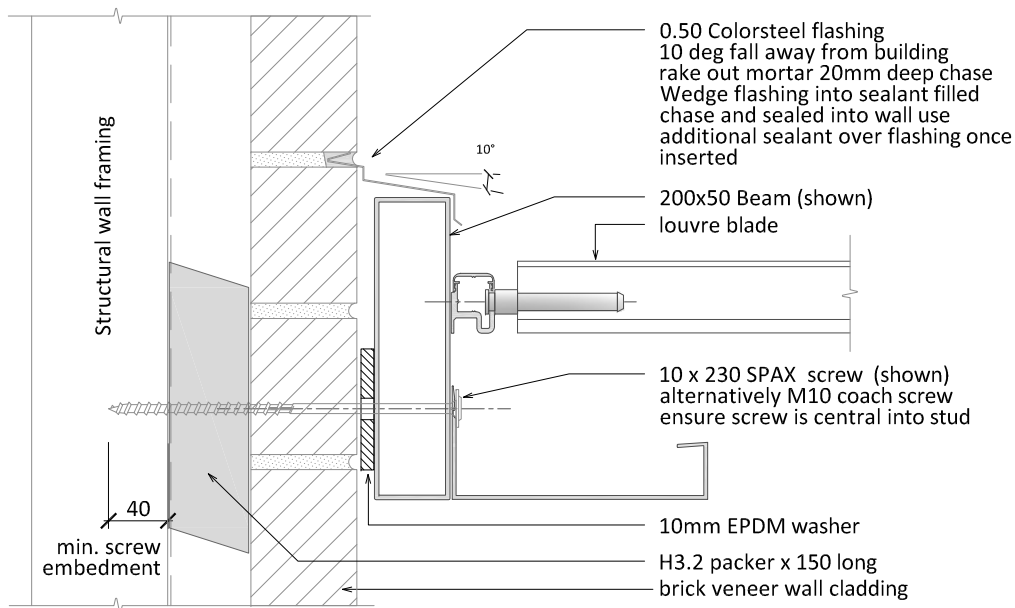
BRACED POST FOOTING

BRACED POST CONCRETE FOOTING

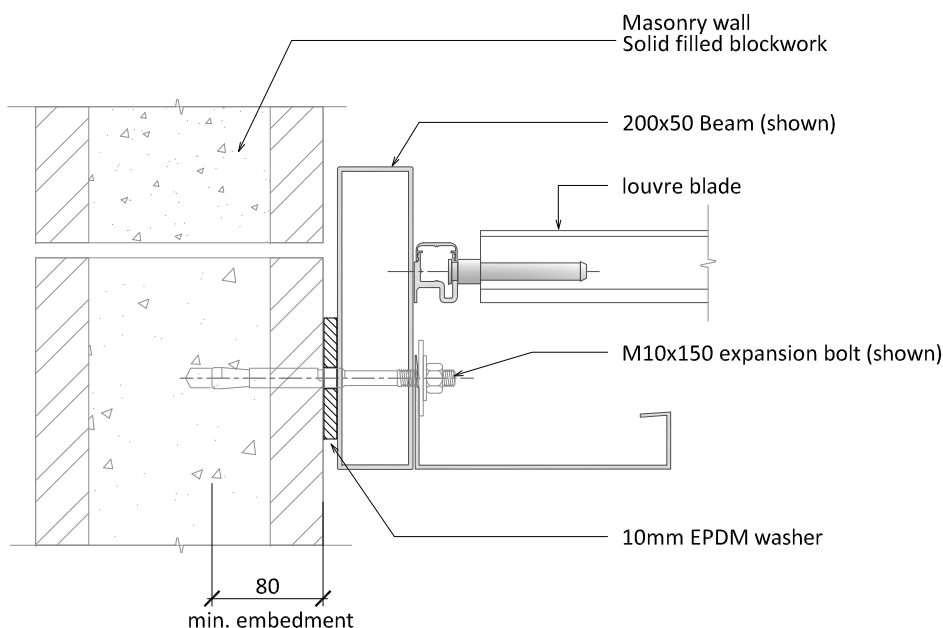
Disclaimer: This information is intended solely as a guide only for the installation of Pacific Outdoor Solutions Ltd products and is to be used in conjunction with the Pacific Outdoor Solutions Limited Louvre Design Manual, NZS 3604 and to comply with the requirements of E2/AS1. All foundations and supporting structure are to be designed to include appropriate fixing allowances for the addition of the louvre system by the building owners designer and contractor. Before ordering ensure that the product is suitable for use in the specific application. Nothing in this information constitutes a statement of fitness for particular purpose - appropriate expert advice should always be obtained. Pacific Outdoor Solutions Ltd makes no warranty regarding the use of this information with non-Pacific Outdoor Solutions Ltd product.

The copyright of this document is the property of Pacific Outdoor Solution Ltd and shall not be reproduced, copied or loaned without prior consent.

PACIFIC LOUVRE ROOFS - FIXING DETAILS



LOUVRE TO BRICK VENEER



LOUVRE TO MASONRY WALL

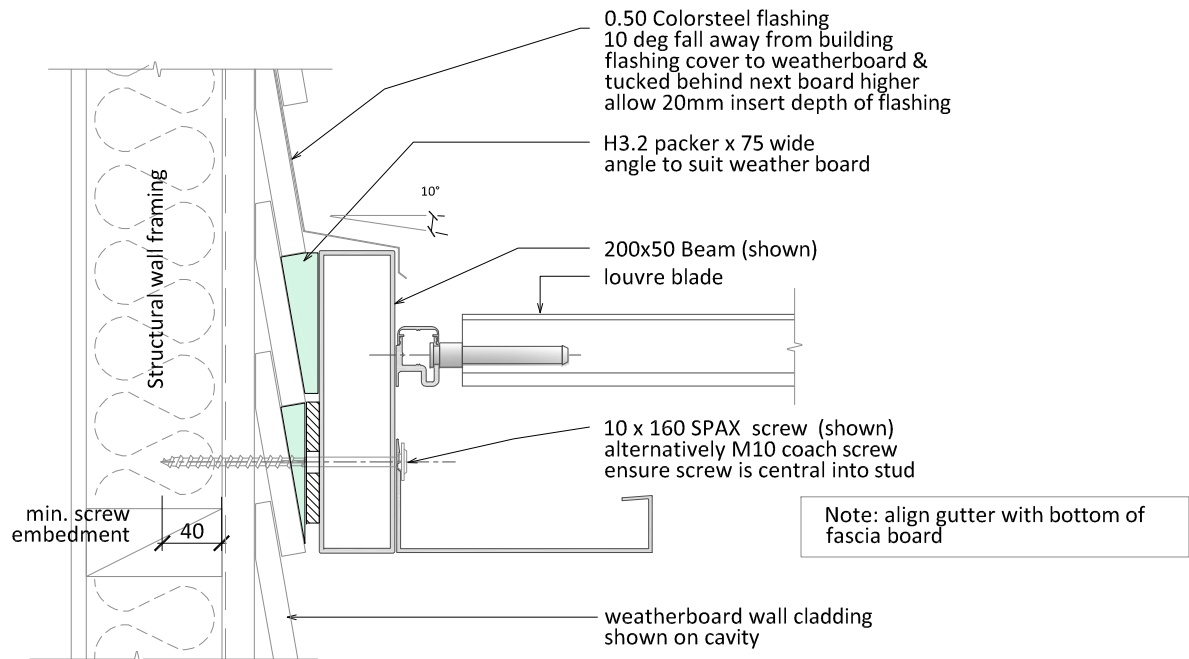
Important Note:

Screw or bolt fixing centres required for the Louvre roof to any building element refer to Louvre Design Manual Sections 6.0 Bracing Requirements and 7.0 Supports use these tables to calculate maximum Tributary areas for bracing / bracket centres.
Building structure i.e. Walls / Lintels/ Beams / Roofs must be designed to include the additional tributary loading of the louvre roof assembly.
The Pacific Outdoor Louvre Design Manual configurations relates only to the effect on the local wind pressure coefficients for the Louvre roof only.

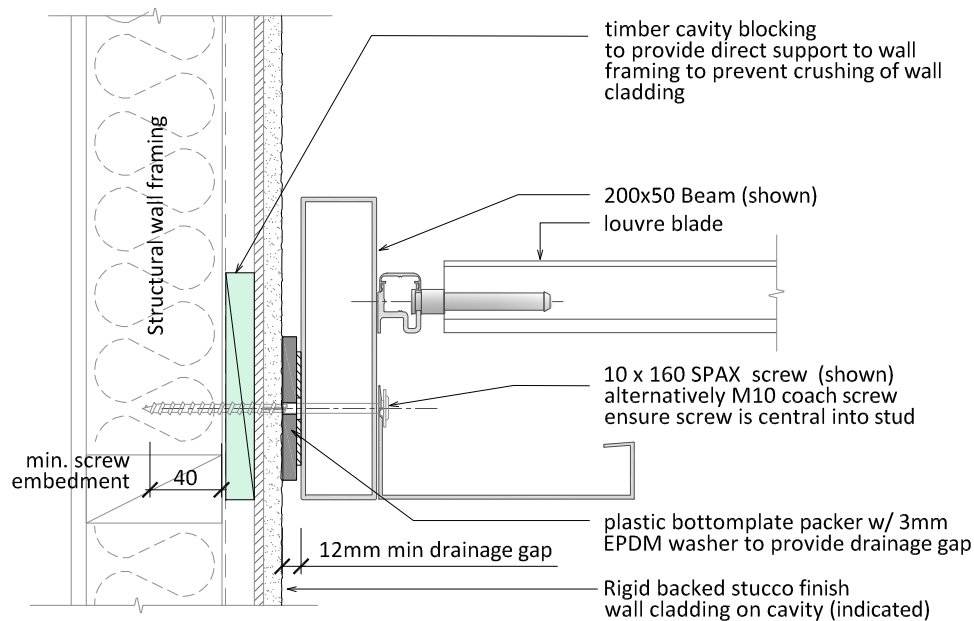
FIXING DETAILS

Disclaimer: This information is intended solely as a guide only for the installation of Pacific Outdoor Solutions Ltd products and is to be used in conjunction with the Pacific Outdoor Solutions Limited Louvre Design Manual, NZS 3604 and to comply with the requirements of E2/AS1. All foundations and supporting structure are to be designed to include appropriate fixing allowances for the addition of the louvre system by the building owners designer and contractor. Before ordering ensure that the product is suitable for use in the specific application. Nothing in this information constitutes a statement of fitness for particular purpose - appropriate expert advice should always be obtained.
Pacific Outdoor Solutions Ltd makes no warranty regarding the use of this information with non-Pacific Outdoor Solutions Ltd product.
The copyright of this document is the property of Pacific Outdoor Solution Ltd and shall not be reproduced, copied or loaned without prior consent.

PACIFIC LOUVRE ROOFS - FIXING DETAILS



LOUVRE TO WEATHERBOARD



LOUVRE TO STUCCO CLADDING

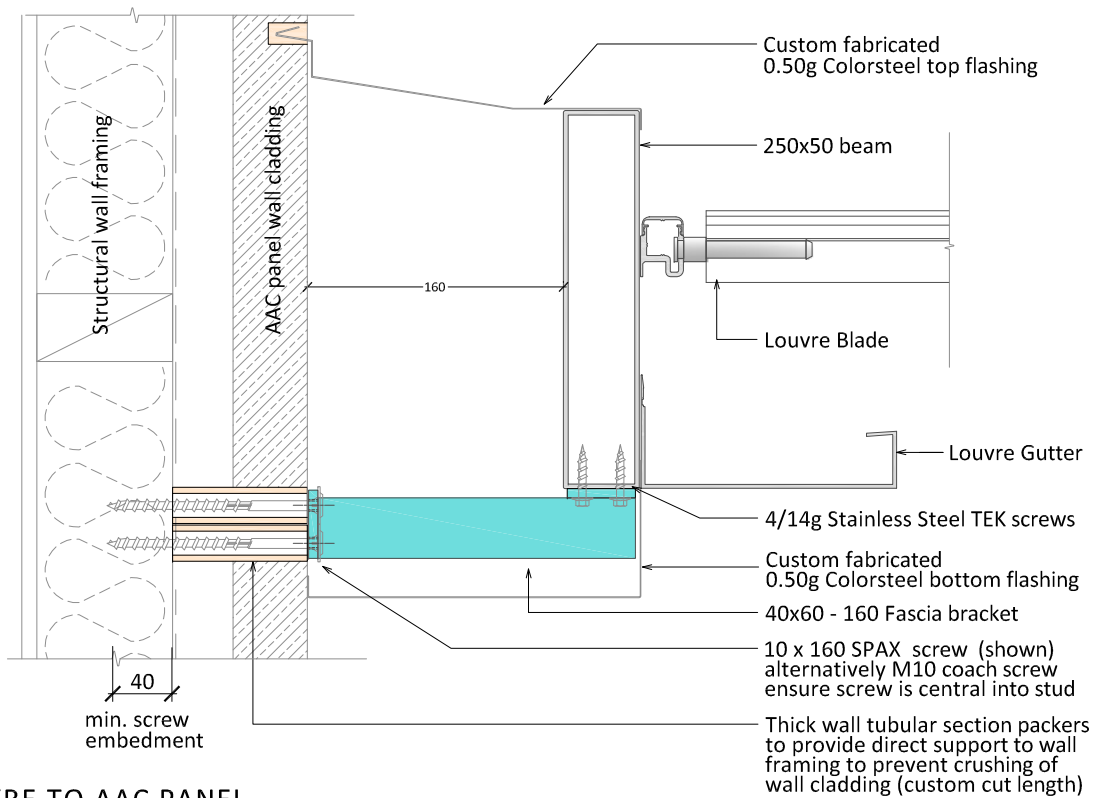
Important Note:

Screw or bolt fixing centres required for the Louvre roof to any building element refer to Louvre Design Manual Sections 6.0 Bracing Requirements and 7.0 Supports use these tables to calculate maximum Tributary areas for bracing / bracket centres. Building structure i.e. Walls / Lintels/ Beams / Roofs must be designed to include the additional tributary loading of the louvre roof assembly. The Pacific Outdoor Louvre Design Manual configurations relates only to the effect on the local wind pressure coefficients for the Louvre roof only.

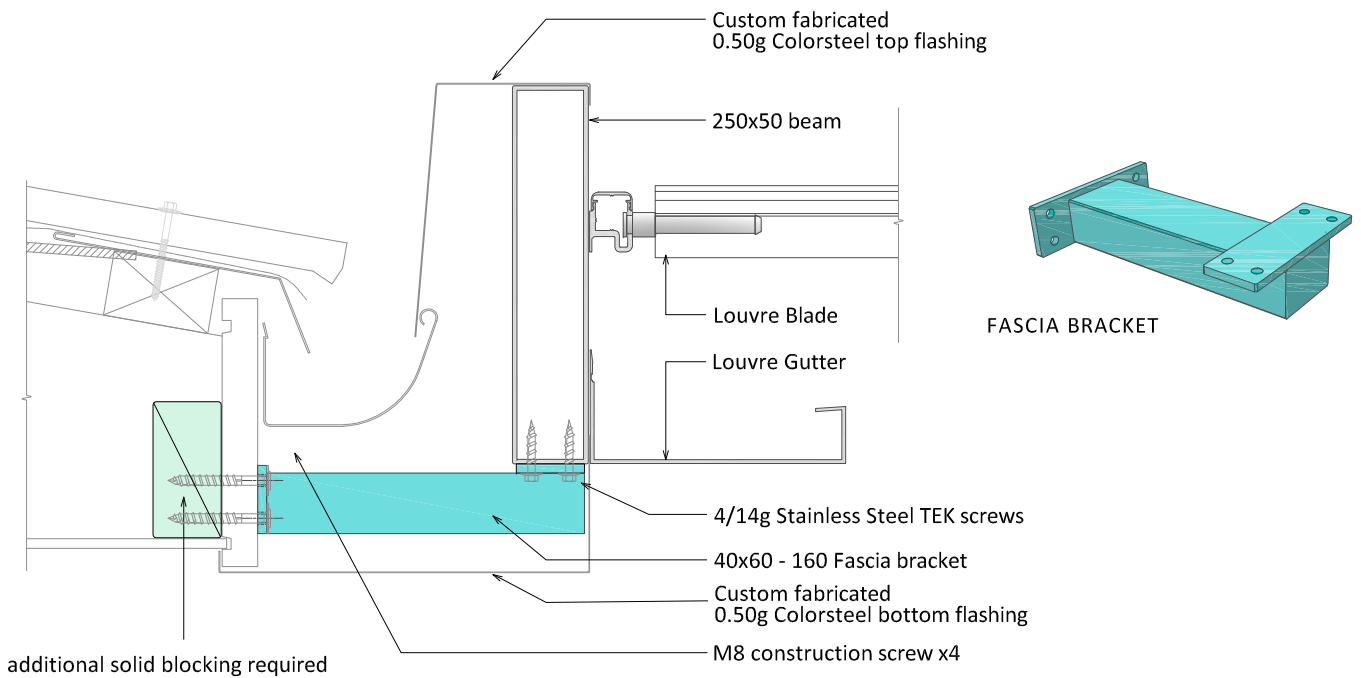
FIXING DETAILS

Disclaimer: This information is intended solely as a guide only for the installation of Pacific Outdoor Solutions Ltd products and is to be used in conjunction with the Pacific Outdoor Solutions Limited Louvre Design Manual, NZS 3604 and to comply with the requirements of E2/AS1. All foundations and supporting structure are to be designed to include appropriate fixing allowances for the addition of the louvre system by the building owners designer and contractor. Before ordering ensure that the product is suitable for use in the specific application. Nothing in this information constitutes a statement of fitness for particular purpose - appropriate expert advice should always be obtained. Pacific Outdoor Solutions Ltd makes no warranty regarding the use of this information with non-Pacific Outdoor Solutions Ltd product. The copyright of this document is the property of Pacific Outdoor Solution Ltd and shall not be reproduced, copied or loaned without prior consent.

PACIFIC LOUVRE ROOFS - FIXING DETAILS



LOUVRE TO AAC PANEL



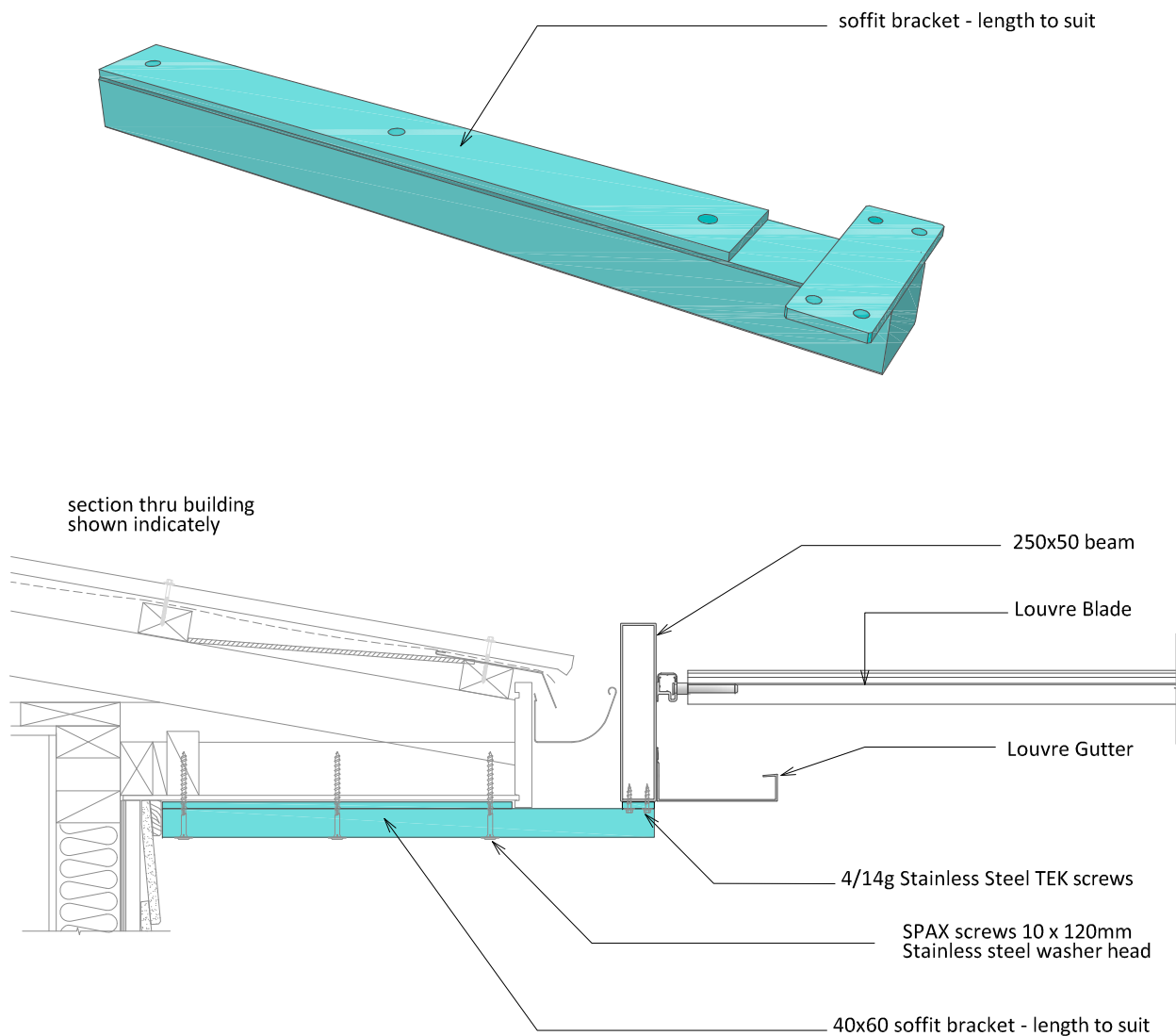
FASCIA BRACKET

FIXING DETAILS

Important Note:

Screw or bolt fixing centres required for the Louvre roof to any building element refer to Louvre Design Manual Sections 6.0 Bracing Requirements and 7.0 Supports use these tables to calculate maximum Tributary areas for bracing / bracket centres. Building structure i.e. Walls / Lintels/ Beams / Roofs must be designed to include the additional tributary loading of the louvre roof assembly. The Pacific Outdoor Louvre Design Manual configurations relates only to the effect on the local wind pressure coefficients for the Louvre roof only.

Disclaimer: This information is intended solely as a guide only for the installation of Pacific Outdoor Solutions Ltd products and is to be used in conjunction with the Pacific Outdoor Solutions Limited Louvre Design Manual, NZS 3604 and to comply with the requirements of E2/AS1. All foundations and supporting structure are to be designed to include appropriate fixing allowances for the addition of the louvre system by the building owners designer and contractor. Before ordering ensure that the product is suitable for use in the specific application. Nothing in this information constitutes a statement of fitness for particular purpose - appropriate expert advice should always be obtained. Pacific Outdoor Solutions Ltd makes no warranty regarding the use of this information with non-Pacific Outdoor Solutions Ltd product. The copyright of this document is the property of Pacific Outdoor Solution Ltd and shall not be reproduced, copied or loaned without prior consent.

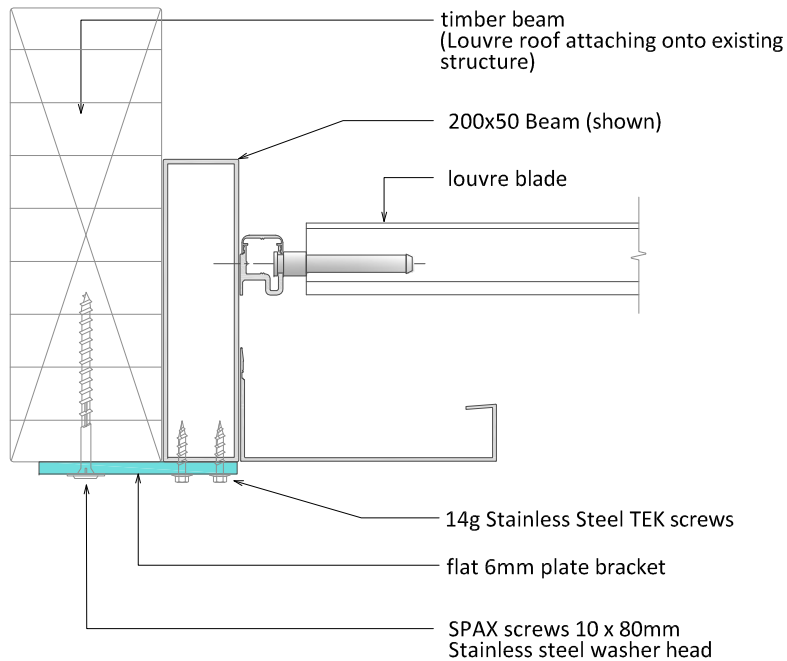


Fixing of Soffit brackets for the mounting of the louvre assembly.
Initially mount only two brackets being the brackets closest to the each end of the support beam, once the beam is inplace then line up all other required brackets

SOFFIT FIXING BRACKET

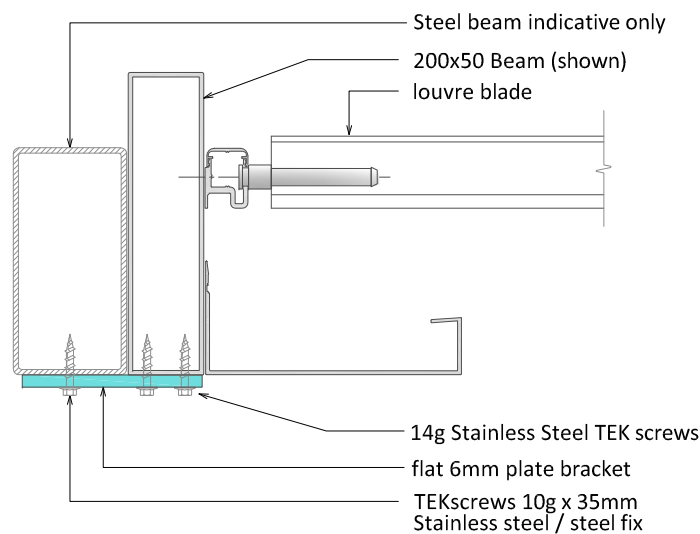
Disclaimer: This information is intended solely as a guide only for the installation of Pacific Outdoor Solutions Ltd products and is to be used in conjunction with the Pacific Outdoor Solutions Limited Louvre Design Manual, NZS 3604 and to comply with the requirements of E2/AS1. All foundations and supporting structure are to be designed to include appropriate fixing allowances for the addition of the louvre system by the building owners designer and contractor. Before ordering ensure that the product is suitable for use in the specific application. Nothing in this information constitutes a statement of fitness for particular purpose - appropriate expert advice should always be obtained. Pacific Outdoor Solutions Ltd makes no warranty regarding the use of this information with non-Pacific Outdoor Solutions Ltd product. The copyright of this document is the property of Pacific Outdoor Solution Ltd and shall not be reproduced, copied or loaned without prior consent.

PACIFIC LOUVRE ROOFS - FIXING DETAILS



LOUVRE TO TIMBER BEAM

Note: timber beam must be designed to include the Louvre load



LOUVRE TO STEEL RHS

Note: steel beam must be designed to include the Louvre load

FIXING DETAILS

Important Note:

Screw or bolt fixing centres required for the Louvre roof to any building element refer to Louvre Design Manual Sections 6.0 Bracing Requirements and 7.0 Supports use these tables to calculate maximum Tributary areas for bracing / bracket centres.
Building structure i.e. Walls / Lintels/ Beams / Roofs must be designed to include the additional tributary loading of the louvre roof assembly.
The Pacific Outdoor Louvre Design Manual configurations relates only to the effect on the local wind pressure coefficients for the Louvre roof only.

Disclaimer: This information is intended solely as a guide only for the installation of Pacific Outdoor Solutions Ltd products and is to be used in conjunction with the Pacific Outdoor Solutions Limited Louvre Design Manual, NZS 3604 and to comply with the requirements of E2/AS1. All foundations and supporting structure are to be designed to include appropriate fixing allowances for the addition of the louvre system by the building owners designer and contractor. Before ordering ensure that the product is suitable for use in the specific application. Nothing in this information constitutes a statement of fitness for particular purpose - appropriate expert advice should always be obtained.
Pacific Outdoor Solutions Ltd makes no warranty regarding the use of this information with non-Pacific Outdoor Solutions Ltd product.
The copyright of this document is the property of Pacific Outdoor Solution Ltd and shall not be reproduced, copied or loaned without prior consent.