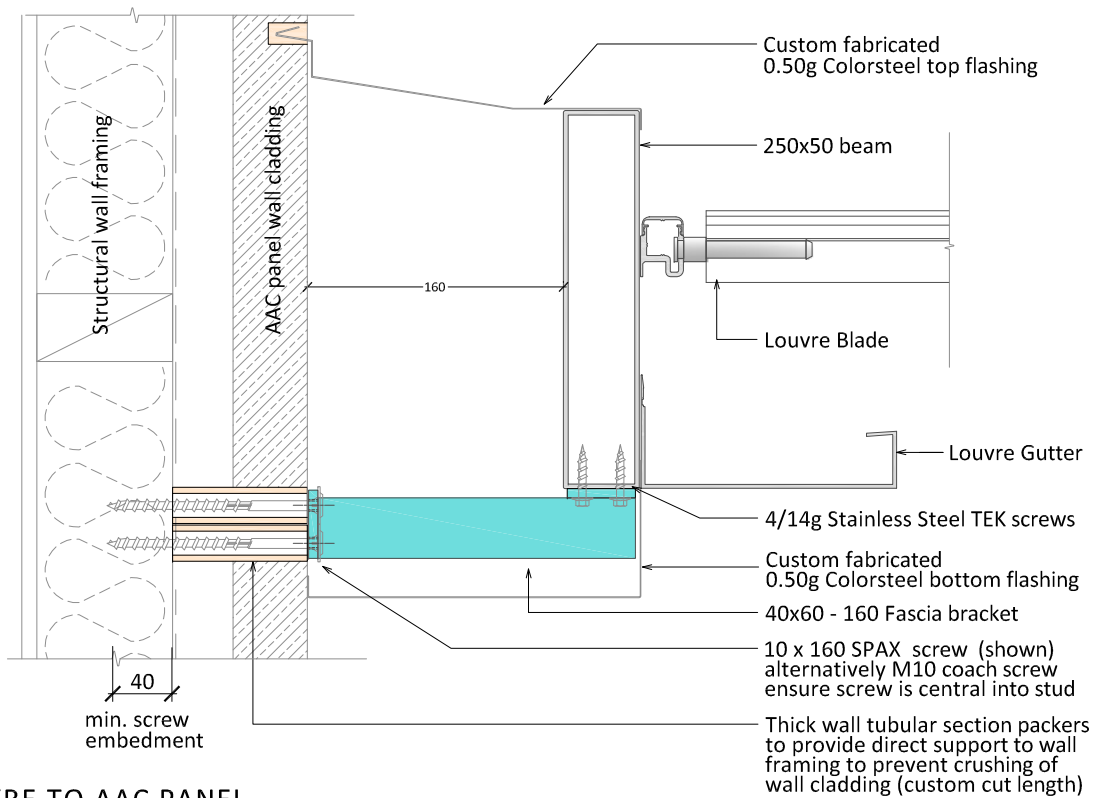
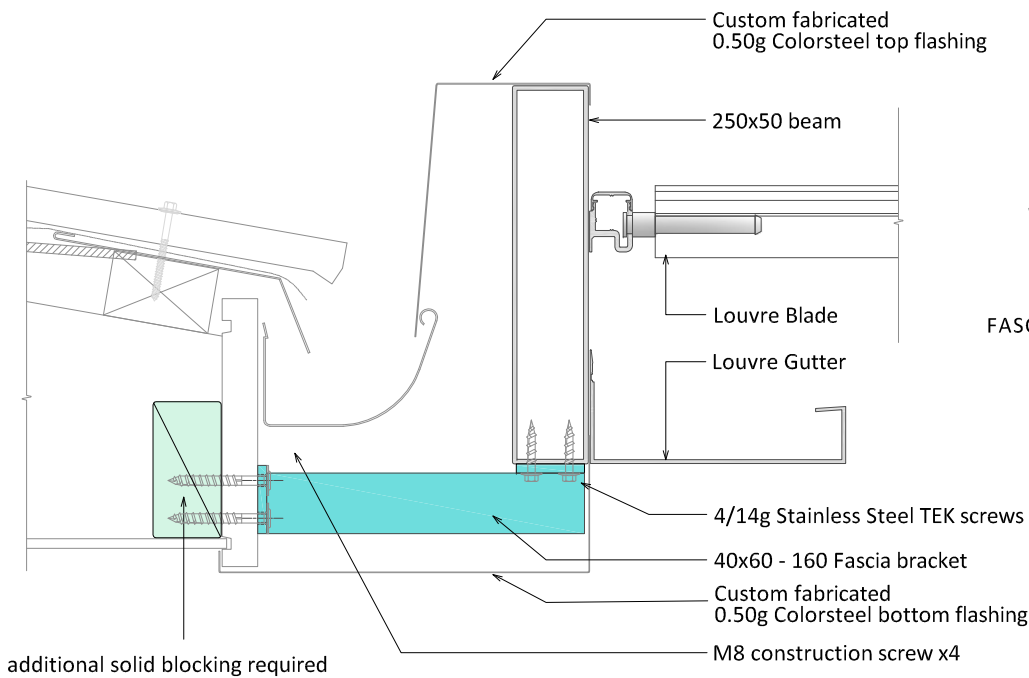


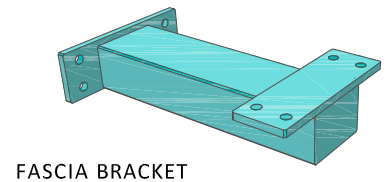
## PACIFIC LOUVRE ROOFS - FIXING DETAILS



LOUVRE TO AAC PANEL



FASCIA BRACKET



### FIXING DETAILS

#### Important Note:

Screw or bolt fixing centres required for the Louvre roof to any building element refer to Louvre Design Manual Sections 6.0 Bracing Requirements and 7.0 Supports use these tables to calculate maximum Tributary areas for bracing / bracket centres. Building structure i.e. Walls / Lintels/ Beams / Roofs must be designed to include the additional tributary loading of the louvre roof assembly. The Pacific Outdoor Louvre Design Manual configurations relates only to the effect on the local wind pressure coefficients for the Louvre roof only.

Disclaimer: This information is intended solely as a guide only for the installation of Pacific Outdoor Solutions Ltd products and is to be used in conjunction with the Pacific Outdoor Solutions Limited Louvre Design Manual, NZS 3604 and to comply with the requirements of E2/AS1. All foundations and supporting structure are to be designed to include appropriate fixing allowances for the addition of the louvre system by the building owners designer and contractor. Before ordering ensure that the product is suitable for use in the specific application. Nothing in this information constitutes a statement of fitness for particular purpose - appropriate expert advice should always be obtained. Pacific Outdoor Solutions Ltd makes no warranty regarding the use of this information with non-Pacific Outdoor Solutions Ltd product. The copyright of this document is the property of Pacific Outdoor Solution Ltd and shall not be reproduced, copied or loaned without prior consent.